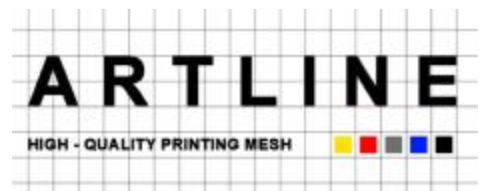


# ARTLINE® PET 1500

The screen printing mesh professionals use



# ARTLINE® PET 1500

The screen printing mesh professionals use

ARTLINE® PET 1500 is the best stencil carrier for an almost infinite number of screen printing applications - the most wanted for decoration of any printable substrate. ARTLINE® PET 1500 is available in the largest range of different screen printing mesh types.

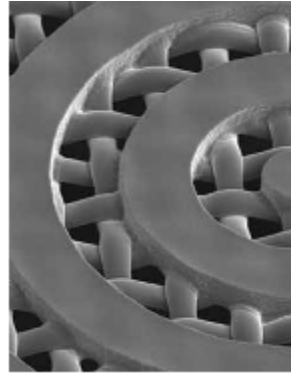
Mesh features	Screen/stencil maker benefit	Printer benefit
Unsurpassed UV-A light undercutting protection of yellow mesh	<ul style="list-style-type: none"> <li>▪ Absorption range adapted to the UV-A radiation spectrum</li> <li>▪ Sharp-edged reproduction of the artwork on the stencil</li> <li>▪ Finest detail reproduction in stencil</li> <li>▪ Wide exposure tolerance</li> </ul>	<ul style="list-style-type: none"> <li>▪ Artline yellow supports the printing of demanding tasks in which high resolution detail are essential</li> <li>▪ High reproducibility of fine halftones and its gradients in print</li> <li>▪ Best edge definition in print</li> </ul>
Adhesion and preparation optimized mesh surface	<ul style="list-style-type: none"> <li>▪ Homogeneous coating and constant application of emulsion</li> <li>▪ Easy and secure capillary film application thanks to excellent wetting properties</li> <li>▪ Compatible with all standard emulsions</li> </ul>	<ul style="list-style-type: none"> <li>▪ Extended screen life</li> <li>▪ High quality image reproduction</li> </ul>
Reproducible mesh relaxation	<ul style="list-style-type: none"> <li>▪ The tension drop between the stretching and printing process is stable and low for subsequent print runs</li> <li>▪ Process and product reliability</li> </ul>	<ul style="list-style-type: none"> <li>▪ Better color to color reproduction</li> <li>▪ Good reproducibility of fine details in long print runs</li> </ul>
Good ink and paste release behaviour	<ul style="list-style-type: none"> <li>▪ When bonding after the stretching process, adhesive passes good through the mesh, therefore less problem in bonding the mesh to the frame</li> </ul>	<ul style="list-style-type: none"> <li>▪ Uniform ink application on large sized area prints</li> <li>▪ Maintaining of tightest color shade tolerances</li> <li>▪ High quality printing results in long print volume</li> </ul>
Good antistatic behavior, thanks to Artline antistatic treatment	<ul style="list-style-type: none"> <li>▪ Simple, reliable and user-friendly screen production</li> <li>▪ Reduced susceptibility to dust in the stencil production</li> <li>▪ Reduction of retouching time</li> </ul>	<ul style="list-style-type: none"> <li>▪ Production reliability thanks to reduced risk of electrostatic charge</li> <li>▪ Error-free and clean printing</li> <li>▪ Reduction of waste in the print process and increased production efficiency</li> </ul>
Wide standard range with high availability	<ul style="list-style-type: none"> <li>▪ Optimizing of storage management</li> <li>▪ Short delivery time</li> <li>▪ High reliability ensures continuous production</li> </ul>	<ul style="list-style-type: none"> <li>▪ Ensured continual delivery of stencils</li> <li>▪ Unlimited options of ink/paste film thickness</li> </ul>
Manufactured to meet the highest industry standards	<ul style="list-style-type: none"> <li>▪ Process stability through consistent quality control</li> <li>▪ Quality you can count on</li> </ul>	<ul style="list-style-type: none"> <li>▪ High quality printing results</li> <li>▪ Process reliability thanks to the best stencil quality</li> <li>▪ Predictable results, no surprises on press</li> </ul>

# ARTLINE® PET 1500

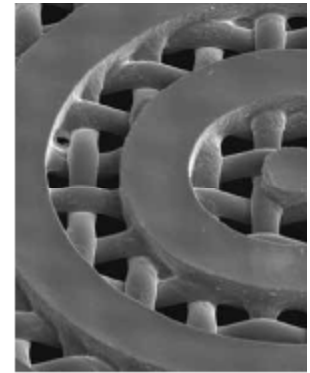
The screen printing mesh professionals use

## Unsurpassed UV-A light undercutting protection

Artline's proprietary mesh dying process allows for a large exposure latitude and the highest resolution of sharp edged stencil copy.



Undercutting protection of ARTLINE® PET 1500 120/305-34Y

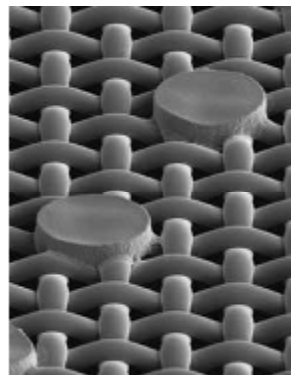


Undercutting protection of standard dyed polyester mesh 120/305-34Y

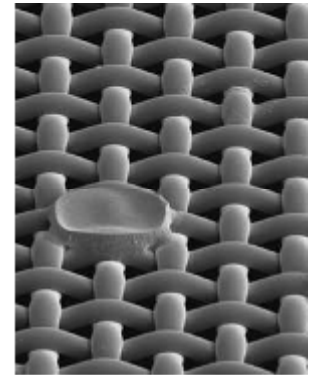
## Surface treatment

The ARTLINE® PET 1500 surface treatment ensures optimum adhesion, good wettability and favorable antistatic properties

- ideal for high quality and efficient processing of all the commercially-available screen printing stencil systems.



Stencil adhesion of ARTLINE® PET 1500 120/305-34Y



Stencil adhesion of standard polyester mesh 120/305-34Y

## Applications

ARTLINE® PET 1500 impresses with its performance in a wide variety of applications, ranging from graphic screen printing in small and large sizes, such as posters, displays, and signage; printing on plastics such as sporting goods, thermoformed parts, etc.; on the decoration of ceramic, directly or indirectly, and on up to textile printing and other industrial printing tasks.



Backlit posters with halftones higher than 30 lines/cm printed with ARTLINE® PET 1500 165/420-27Y



For selected clear varnish on labels, printed with ARTLINE® PET 1500 77/195-55Y



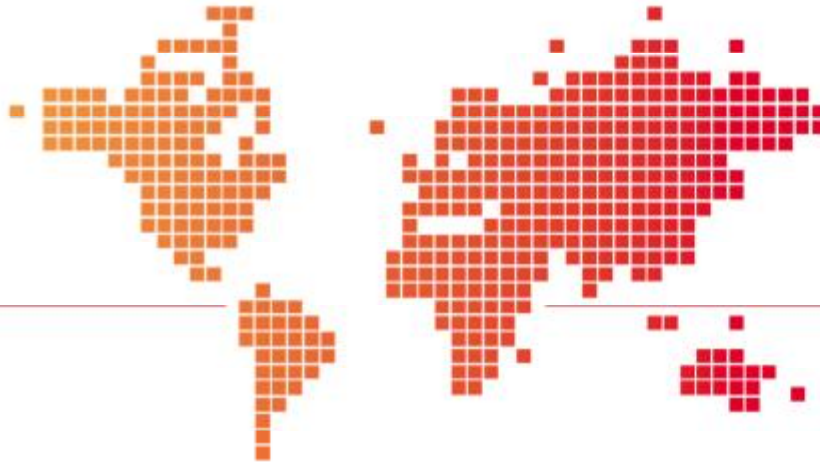
Intense metallic effects on sporting goods with ARTLINE® PET 1500 90/230-40Y



Great detail reproduction on ceramic decals printed with ARTLINE® PET 1500 150/380-31Y

### Mesh assortment

The ARTLINE® PET 1500 range is available in a broad range of mesh types and widths. The mesh properties provide solutions for all types of screen printing applications. Choose the ideal screen printing meshes from our product portfolio for your printing needs. For specific advice on your application please contact your local Artline sales representative.



3

## Contact us

Artline is the leading manufacturer of precision fabrics from monofilaments for the screen printing and filtration market. Artline products are used in a wide variety of industries, reaching from electronics, graphics, medical, automotive, food and pharmaceutical applications to aerospace, mining & refining and architecture. With its profound understanding of the applications Artline helps its customers to achieve optimum results in their industrial processes. Subsidiaries and fabrications centers around the world provide local technical service for the broad range of solutions offered by Artline.

#### Contact Address,

Survey No. 42,  
Geon Masana,  
Taluka OLPAD,  
District SURAT.

#### Let's Talk

Sales : +91 98988 21000  
Mr. Arish Shah : +91 98251  
46005  
Mr. Saurabh Shah : +91-98241-  
92823

#### Email Us

[sales@escreenfilters.com](mailto:sales@escreenfilters.com)  
[arish@escreenfilters.com](mailto:arish@escreenfilters.com)  
[saurabh@escreenfilters.com](mailto:saurabh@escreenfilters.com)

#### Working Hours

Mon to Sat : 9 AM to 11 PM  
Sunday : 10 AM to 6 PM



Our most current general sales conditions shall apply.  
Please consult the most current local product data sheet prior to any use.

