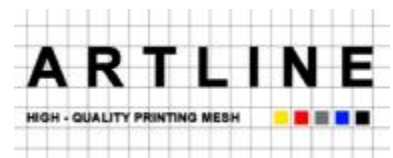


ARTLINE® GLASSLINE

The screen printing mesh efficiency champion for printing functional and decorative glass



ARTLINE® GLASSLINE

The screen printing mesh efficiency champion for printing functional and decorative glass

ARTLINE® GLASSLINE is the screen printing mesh of choice when it comes to produce various sizes of stencils for the glass industry. ARTLINE® GLASSLINE provides the most reproducible printing results for glass applications in cars, buses, trucks and special vehicles. It also offers exceptional image quality and durability for functional and decorative exterior and interior construction glass, as well as in home appliance glass applications.

Mesh features	Screen / stencil maker benefit	Printer benefit
Precise mesh geometry with balanced and low elongation	<ul style="list-style-type: none"> ▪ Efficient stretching process due to the low and balanced mesh elongation ▪ Best reproduction of tension values, as the mesh geometry is precisely maintained ▪ Lean and reliable stencil-making process thanks to constant stencil values such as build-up and surface roughness 	<ul style="list-style-type: none"> ▪ Best repeatability of ink or paste deposit ▪ Consistently high print quality ▪ Reduction of costs due to longer stencil life
Adhesion optimized surface treatment	<ul style="list-style-type: none"> ▪ Excellent stencil adhesion ▪ Reliable and homogeneous coating with emulsion ▪ Compatible with all standard emulsions 	<ul style="list-style-type: none"> ▪ Less downtime due to premature stencil breakdown on the printing press during high volume printing ▪ First-class stencil quality and printing results
Exposure-optimized yellow mesh coloration	<ul style="list-style-type: none"> ▪ Accurate reproduction from the artwork to the stencil ▪ Absorption range adapted to the UV radiation spectrum 	<ul style="list-style-type: none"> ▪ Best edge definition and detail reproduction of heating conductor lines as well as of fine functional and decorative elements
Good antistatic behavior thanks to Artlineantistatic treatment	<ul style="list-style-type: none"> ▪ Simple, reliable and user-friendly screen production ▪ Reducing susceptibility to dust in the stencil production ▪ Reduction of retouching 	<ul style="list-style-type: none"> ▪ Production reliability due to reduced risk of electrostatic charge ▪ Error-free, smooth and clean printing ▪ Reduction of waste and increased production efficiency
Knot and fault indication	<ul style="list-style-type: none"> ▪ Efficient, rational stencil production and quality control ▪ Cost reduction thanks to the optimization of the mesh utilization rate ▪ Reduction of the mesh waste and stencil rejections 	<ul style="list-style-type: none"> ▪ No surprises on press because of a missed knot ▪ Reduced downtime of the printing press ▪ Cost reduction
Industry specific product range up to a mesh width of 4 meters	<ul style="list-style-type: none"> ▪ Wide range of medium-coarse screen printing mesh up to 4 m width ▪ Optimization of storage management ▪ High availability ensures continuous production 	<ul style="list-style-type: none"> ▪ Ensured continuous delivery of stencils ▪ Matching product for each printing task
Manufactured to meet the highest industry standards	<ul style="list-style-type: none"> ▪ Process reliability through consistent quality control ▪ Constant mesh and stencil values 	<ul style="list-style-type: none"> ▪ Process reliability thanks to the high quality stencils ▪ Repeatable and uncompromising print quality

ARTLINE® GLASSLINE

The screen printing mesh efficiency champion for printing functional and decorative glass

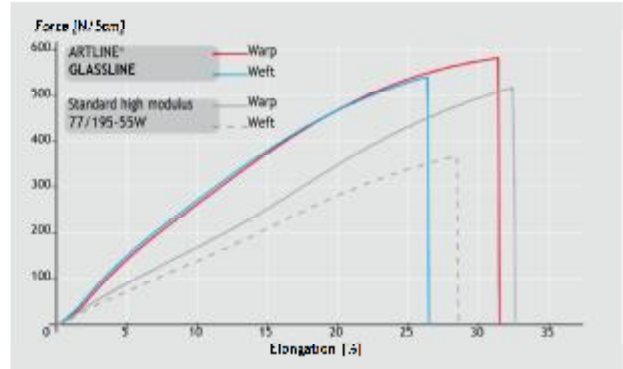
Unique precise mesh geometry

The precision of the mesh geometry and the balanced low elongation of ARTLINE® GLASSLINE, provides an efficient, reliable stencil making process and offers the highest reproducibility when printing on glass.

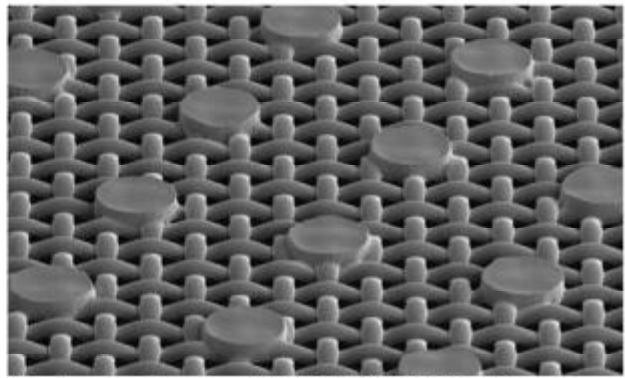
For continuous production, the latest weaving processes require the yarn to be previously knotted. This allows the yarn bobbins to be changed without interrupting the weaving process. In order to make simple and safe production of printing screens for the glass industry, these knots are highlighted in ARTLINE® GLASSLINE for the user's convenience.

Adhesion optimized surface treatment

The surface treatment of ARTLINE® GLASSLINE is designed to obtain an excellent stencil adhesion with all standard emulsions. It also facilitates a repeatable and homogenous coating, resulting in a state of the art printing quality especially during highest production volumes. ARTLINE® GLASSLINE thus enables production of screen printing stencils, ensuring maximum economy and highest accuracy.



Stress-strain behavior ARTLINE® GLASSLINE 77/195-55W



Adhesion optimized surface - ARTLINE® GLASSLINE 77/195-55W

Applications

ARTLINE® GLASSLINE is the screen printing mesh of choice in the automotive-, construction- and home appliance glass industries.



For unchanging quality during high production runs of window heating conductors printed with ARTLINE® GLASSLINE 77/195-48Y



High color density and sharp contours when printing doors and room dividers with ARTLINE® GLASSLINE 61/156-64W



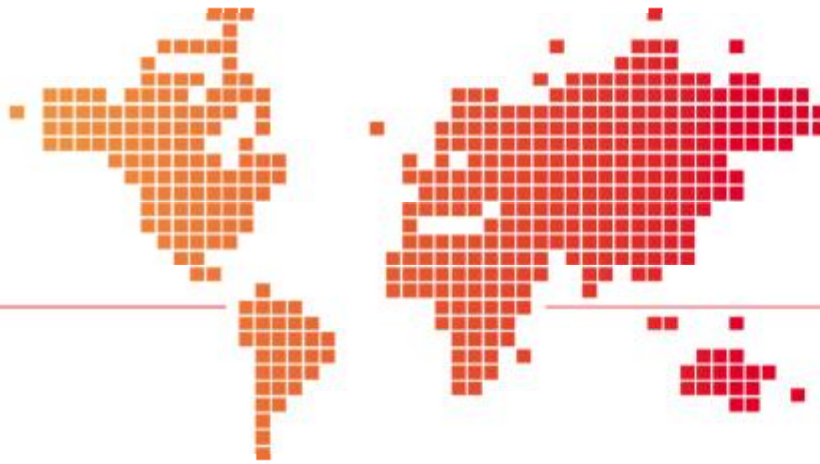
For a precise and durable print image on the glass facade with ARTLINE® GLASSLINE 68/175-55W



Optimal coverage and sharp-edged control icons printed with ARTLINE® GLASSLINE 120/305-34Y

Mesh assortment

The ARTLINE® GLASSLINE assortment is tailored for the diverse requirements in the glass industry. Choose from our product portfolio the ideal screen printing mesh solution for your projects. For specific advice on your application please contact your local Artline sales representative.



Contact us

Artline is the leading manufacturer of precision fabrics from monofilaments for the screen printing and filtration market. Artline products are used in a wide variety of industries, reaching from electronics, graphics, medical, automotive, food and pharmaceutical applications to aerospace, mining & refining and architecture. With its profound understanding of the applications Artline helps its customers to achieve optimum results in their industrial processes. Subsidiaries and fabrications centers around the world provide local, technical service for the broad range of solutions offered by Artline.

Contact Address,

Survey No. 42,
Geon Masma,
Taluka OLPAD,
District SURAT.

Lets Talk

Sales : +91 98988 21000
Mr. Amish Shah : +91-98251-
46005
Mr. Saurabh Shah : +91-98241-
92823

Email Us

sales@escreenfilters.com
amish@escreenfilters.com
saurabh@escreenfilters.com

Working Hours

Mon to Sat - 9 AM to 11 PM
Sunday - 10 AM to 6 PM



Our most current general sales conditions shall apply.
Please consult the most current local product data sheet prior to any use.

ARTLINE

HIGH - QUALITY PRINTING MESH

